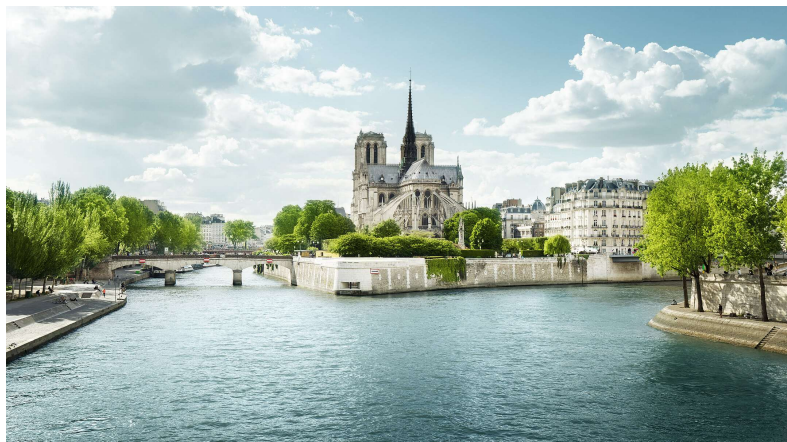


FRANCE – PARIS, FONTAINEBLEAU & VERSAILLES

8-days / 7-nights easy to moderate GUIDED cycling on a **STANDARD PLUS** barge, Moret to Auvers or v.v.



The Île-de-France is the focus of this unique cycling cruise along the Loing, Seine and Oise river valleys. Winding its way between the artists' villages of Moret-sur-Loing and Auvers-sur-Oise, which inspired Impressionist and post-Impressionist painters, this tour seamlessly marries together history, art, architecture and charming landscapes, all with the Paris, the City of Light, at its very centre. We take in the extensive gardens of the opulent royal palaces Fontainebleau and Versailles, cycle through old royal hunting grounds now protected as national forest, visit sites of great artistic importance, including Barbizon and van Gogh's grave, and experience Paris from the water.

Bike & Barge cruises combine two popular ways of exploring Europe (cycling and river cruising), allowing partners of different abilities and interests to holiday together (trips are just as interesting for leisure cyclists OR enthusiasts). Unpack once and come 'home' each night to a wonderful meal and a comfortable cabin with your own bathroom. Well-maintained multi-gear bicycles with panniers are provided – easy to ride and ideal for the route – and the guided cycling program is fascinating and varied, with free time to explore each day's destination.

We offer this as a guided Bike & Boat cycling cruise; however, you can decide each day if you want to join the guided tour or ride independently. On one day there is no cycling, to avoid heavy traffic in the southern outskirts of Paris, and you stay onboard to enjoy the cruise to (or from) Paris, taking in the sights of the city from the Seine and Canal St-Martin. On other days you may decide to stay onboard instead of cycling but there are no sightseeing provisions for non-cyclists - talk to us for more details for non-cyclists.

Departs:

Moret-sur-Loing (Fontainebleau) to Auvers-sur-Oise (Versailles): 18 September; 2 October 2025

Auvers-sur-Oise (Versailles) to Moret-sur-Loing (Fontainebleau): 25 September; 9 October 2025

Cost from: \$2895 per person twin share, low season departure 9 October
\$3155 per person twin share, mid season departures 25 September, 2 October
\$3410 per person twin share, high season departures 18 September

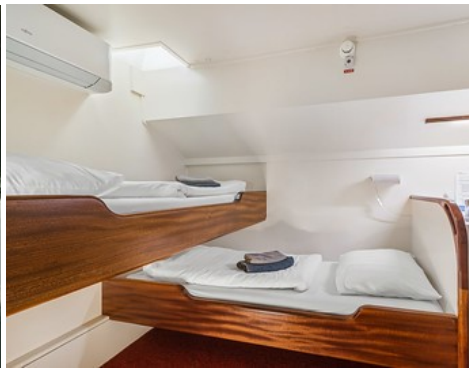
Single cabin (only one available per departure) cost on request

A limited number of E-Bikes are available (at extra cost - request early to avoid disappointment).

Included: 7 nights' accommodation in cabins with twin split-level beds or double bed and compact ensuite shower / toilet; 7 breakfasts, 6 packed lunches, 6 dinners, coffee & tea onboard; guided cycling tours with English-speaking guide; guided city walks as per itinerary; route information (1 set per cabin) and GPS tracks on request; hybrid bike hire with pannier, lock, water bottle and bike helmet rental; bike insurance.

Not included: Drinks, 1 dinner, entrance fees, travel insurance, transfers to/from the barge at the start/end of the tour, personal expenses and gratuities. Special diets at extra cost (advise when booking).

Call OUTDOOR TRAVEL on 1800 331 582 for details or reservations



Suggested itinerary: *subject to change at the discretion of the captain and tour guide. Cycling distances shown are all approximate. Tour operates in reverse direction on alternate weeks.*

Day 1: Arrive in Moret-sur-Loing

cycling @ 10km

Arrive between 1.00pm and 2.00pm to the barge moored at Moret-sur-Loing. Once settled into your cabin, meet your crew and fellow passengers for a short warm-up ride. Moret was home to the English painter Alfred Sisley for the last decade of his life and some of his most notable works depict the town and surrounding landscapes.

Day 2: Moret – Melun

cycling @ 45km

Our first highlight of the week: Fontainebleau, with plenty of time to explore the extensive gardens of the chateau. It was a favourite of French royalty because of the abundant game in the surrounding Forêt de Fontainebleau, and it became Napoleon's Imperial Palace after the French Revolution. He famously farewelled his Old Guard from the steps of the palace shortly after his first abdication. We continue our ride to the artists' village of Barbizon, which inspired the 'Barbizon school' of landscape painters, and to Melun.

Day 3: Melun – Vigneux-sur-Seine

cycling @ 50km

Our route mostly follows the River Seine today. First off an easy and mostly flat ride to Corbeil-Essones, at the confluence of the Seine and Essones rivers. We then cycle through the Forêt de Senart, once a royal hunting ground, now 3000 hectares of protected old-growth forest criss-crossed with bridle paths and cycling and walking trails. Deer, boar, foxes, hares and squirrels roam the oak, birch and pine forest. We moor this evening in Vigneux-sur-Seine, within easy distance of Paris.

Day 4: Vigneux-sur-Seine – Paris

no cycling

We cruise along the Seine into Paris, the City of Light. Upon entering Paris we sail the Canal St-Martin to the Bassin de la Villette, where the barge moors. We usually reach our mooring point by lunchtime, allowing plenty of time to visit the city. Dinner this evening is at own arrangements to allow you the pleasure of dining out in Paris.

Day 5: Paris – Bougival

cycling @ 40km

We start the day with a ride through Paris. To avoid traffic, we stick to dedicated cycle paths and quiet roads as much as possible. We pass La Défense, the Eiffel Tower, Notre Dame and Bois de Boulogne, the green lungs of Paris on the city's western fringe. We re-join the Seine as it winds its way towards our overnight mooring point at Bougival, another artists' town which inspired many Impressionists, including Monet, Renoir, Sisley and Morisot.

Day 6: Bougival – Conflans-Sainte-Honorine

cycling @ 45km

Another highlight: a visit to the royal palace and gardens of Versailles. We have the late morning and early afternoon to explore the grounds and the exterior of the palace – the scale, opulence and grandeur must be seen to be believed. After leaving Versailles we cycle past the chateau in Saint Germain-en-Laye (the royal seat prior to Versailles) and through the forest of Saint Germain. We end the day in Conflans-Ste-Honorine, home to many a retired sailor and skipper in the converted houseboats that line the rivers.

Day 7: Conflans-Ste-Honorine – Auvers-sur-Oise

cycling @ 30km

A relaxing ride to conclude our week of cycling. En route to Auvers-sur-Oise we visit the Axe Majeur, a monumental three-kilometre-long artwork with sculptural, architectural and landscape features. We can climb the belvedere for panoramic views over the Île-de-France and La Défense. This afternoon in Auvers we can join a guided tour of the town and visit the graves of Vincent and Theo van Gogh.

Day 8: Tour ends in Auvers

Tour arrangements end after breakfast.

Contact Outdoor Travel for more details and reservations

- Call Toll free: 1800 331 582 or (03) 57551743 or Fax (03) 57501020
- Email: info@outdoortravel.com.au
- Web: <http://www.outdoortravel.com.au>
- Mail: Outdoor Travel Pty Ltd, PO Box 286, Bright, VIC 3741, Australia